



## TROP ICSU Newsletter

October 2020

# For The Teachers By The Teachers

The TROP ICSU educational resources consist of Lesson Plans for educators of Sciences, Social Sciences, and Humanities. Each Lesson Plan consists of a set of teaching tools and a write-up, packaged in the form of a step-by-step guide. The content in a Lesson Plan describes how a topic in a particular discipline can be taught by using examples, case studies, and exercises related to climate change.

**We are happy to announce that we have reached an important milestone in our journey. We have crossed the mark of development of a hundred Lesson Plans in October 2020! We are grateful to our network of partners, collaborators, teachers, educators, and climate science experts for their unwavering support and important contribution to make this possible.**

These Lesson Plans span across various curricula topics and are distributed across ten disciplines. They can be directly used by teachers in both physical and digital classroom setup or can be used with proper customization as per the local context.

We welcome contributions to this collated suite of educational tools. To recommend a relevant tool that you have developed, modified or used, [contact us](#).

### **Pandemic and Global Changes**

Several studies have causally linked climate change to loss of biodiversity, increased human-wildlife conflicts and emergence of new zoonotic diseases. Modern, increasingly mobile human civilization and high-density populations in large cities are a recipe for any new disease to spread quickly and to become a pandemic. We are in the middle of one such pandemic, highlighting the

[Subscribe](#)[Past Issues](#)[Translate ▼](#)

plans which seamlessly integrate with your current curriculum and syllabi of several disciplines.

Team TROP ICSU

[tropicsu@iubs.org](mailto:tropicsu@iubs.org)

**Websites:**

<https://tropicsu.org/>

<https://climatescienceteaching.org>

**Social Media:**

[Facebook](#) | [Twitter](#) | [YouTube](#)

---

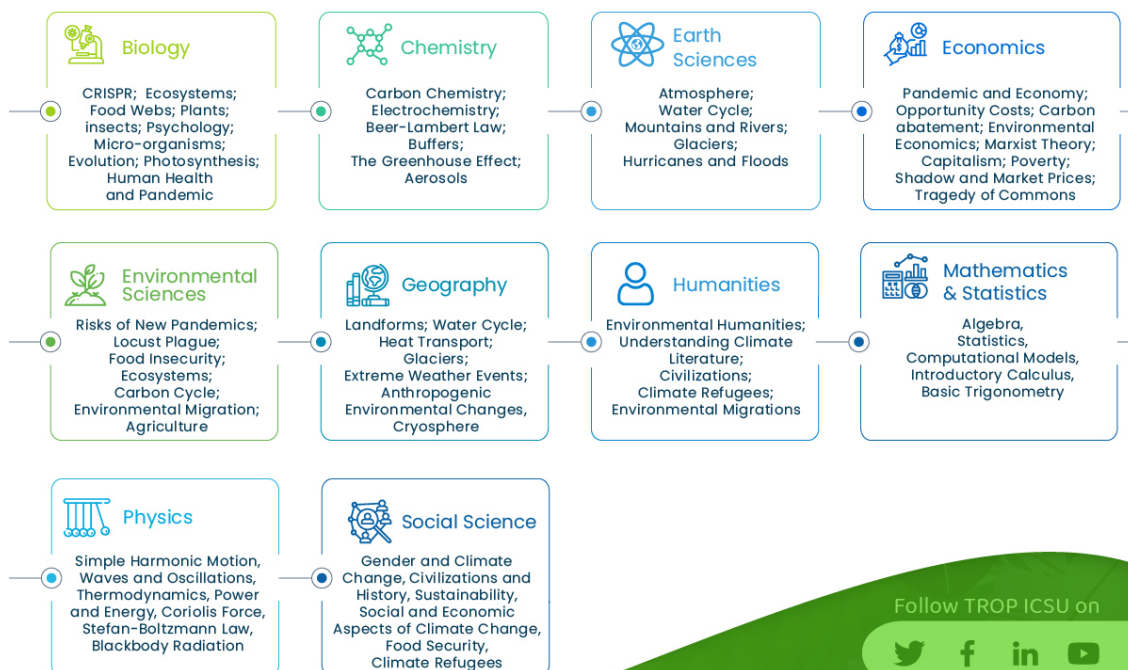
## ***An Overview of TROP ICSU Lesson Plans***

# LESSON PLANS

To Teach Topics From Your Disciplines with Climate  
Changer Data and Case Studies.



Examples,



Follow TROP ICSU on



<https://tropicsu.org/>  
[tropicsu@iubs.org](mailto:tropicsu@iubs.org)

<https://climatescienceteaching.org/>

## Lesson Plans: Pandemic and Global Changes

[Subscribe](#)[Past Issues](#)[Translate ▼](#)

Lesson Plan: Climate Change and Risks of New Pandemics



Lesson Plan: Demography and Pandemics in a Warming World



Lesson Plan: Economic Policy for 'Green Recovery' from the Pandemic

The Lesson Plan "[Climate Change and Risks of New Pandemics](#)" could be used to teach how human activities induced climate change, in turn, causes biodiversity disturbances and could be responsible for the increased risk of animal virus spillover into human populations.

With the help of another Lesson Plan, "[Demography and Pandemics in a Warming World](#)", students could be taught about population patterns, urbanization, and the relation of demography and the environment. This lesson plan will help the students to understand how demographic changes due to factors such as climate change, can make human populations more vulnerable to pandemics like COVID-19.

Another Lesson Plan in this series, "[Economic Policy for 'Green Recovery' from the Pandemic](#)", could be used to teach how carbon pricing vis-a-vis carbon taxes, could help governments' 'green recovery' economic strategies to rebound from the COVID-19 pandemic related economic slowdown.

## ***New Lesson Plans***



Lesson Plan: Gender and Climate Change



Lesson Plan: Why Do Our Brains Ignore Climate Change



Lesson Plan: War in A Warming World

- Why do women face limitations in participation in climate policy and responses?
- How the cap-and-trade policies, reduction in worldwide emissions, and global economic growth are linked to each other?
- What cognitive and psychological factors influence responses to climate change?
- What is climate psychology?

[Subscribe](#)[Past Issues](#)[Translate ▼](#)

- What is Green Capitalism?
- What role did food insecurity play in the mass human migration in Syria?

To know answers to the above and many other interesting questions, visit our [Lesson Plans](#) section on the website.

---

## ***Around the Web: Climate-related Educational Resources***

### **CLIMATEWATCH**

Climate Watch offers open data, visualizations and analysis to help policymakers, educators, researchers, and other stakeholders gather insights on countries' climate progress.

### **Historical Climatology**

This website shares interdisciplinary climate change research with scholars, journalists, students, policymakers, and the general public.



Share



Tweet



Forward



Share



+1

---

*Copyright © 2020 Project TROP ICSU, All rights reserved.*

Want to change how you receive these emails?  
You can update your preferences or unsubscribe from this list.

